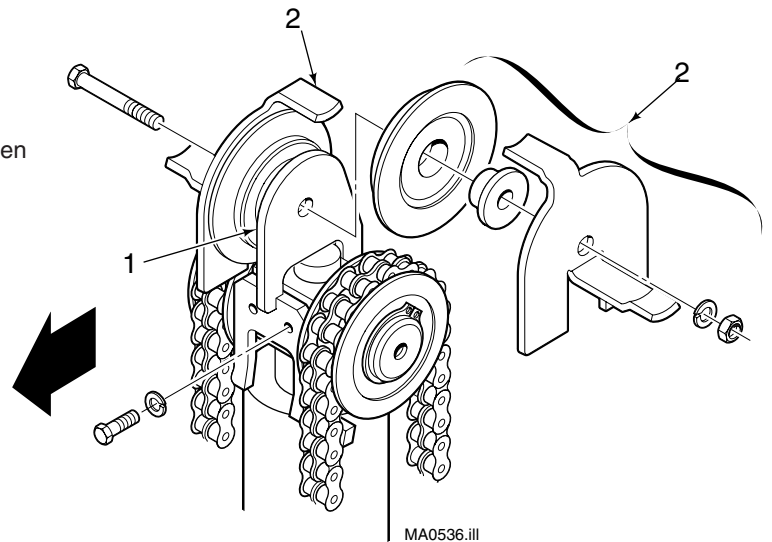


Installation Instructions

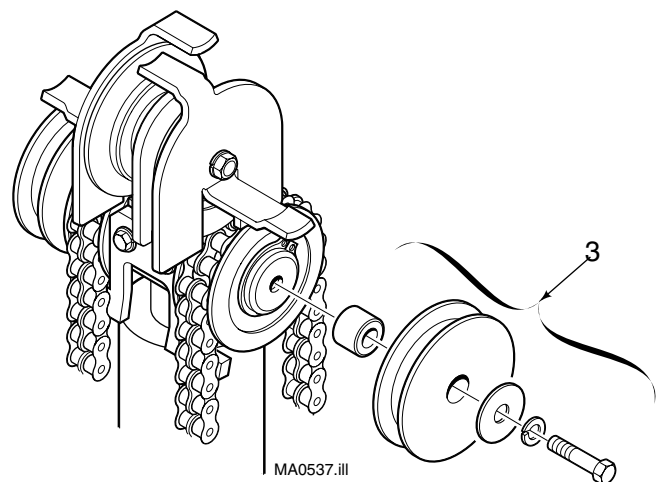
35D/40D and 55D/60D MT MAST Internal Reeving Kits

These instructions describe the field installation of internal reeving kits for MT three stage masts.

- 1 Install the reeving brackets to the crosshead. Tighten the capscrews to a torque of 12 ft.-lbs. (17 Nm).
- 2 Install the rollers and hose guards to the crosshead reeving bracket. Leave the nut finger tight to allow hose installation.



- 3 **Double Function Internal Reeving** - Install the sheaves to the crosshead chain shafts. Leave the capscrews finger tight to allow hose installation.



Part No. 208756 R-3

For Technical Support . . . To Order Parts . . .

Call: 1-888-946-3330

OR

Write: Lift Technologies, 7040 South Highway 11, Westminter, S.C. 29693

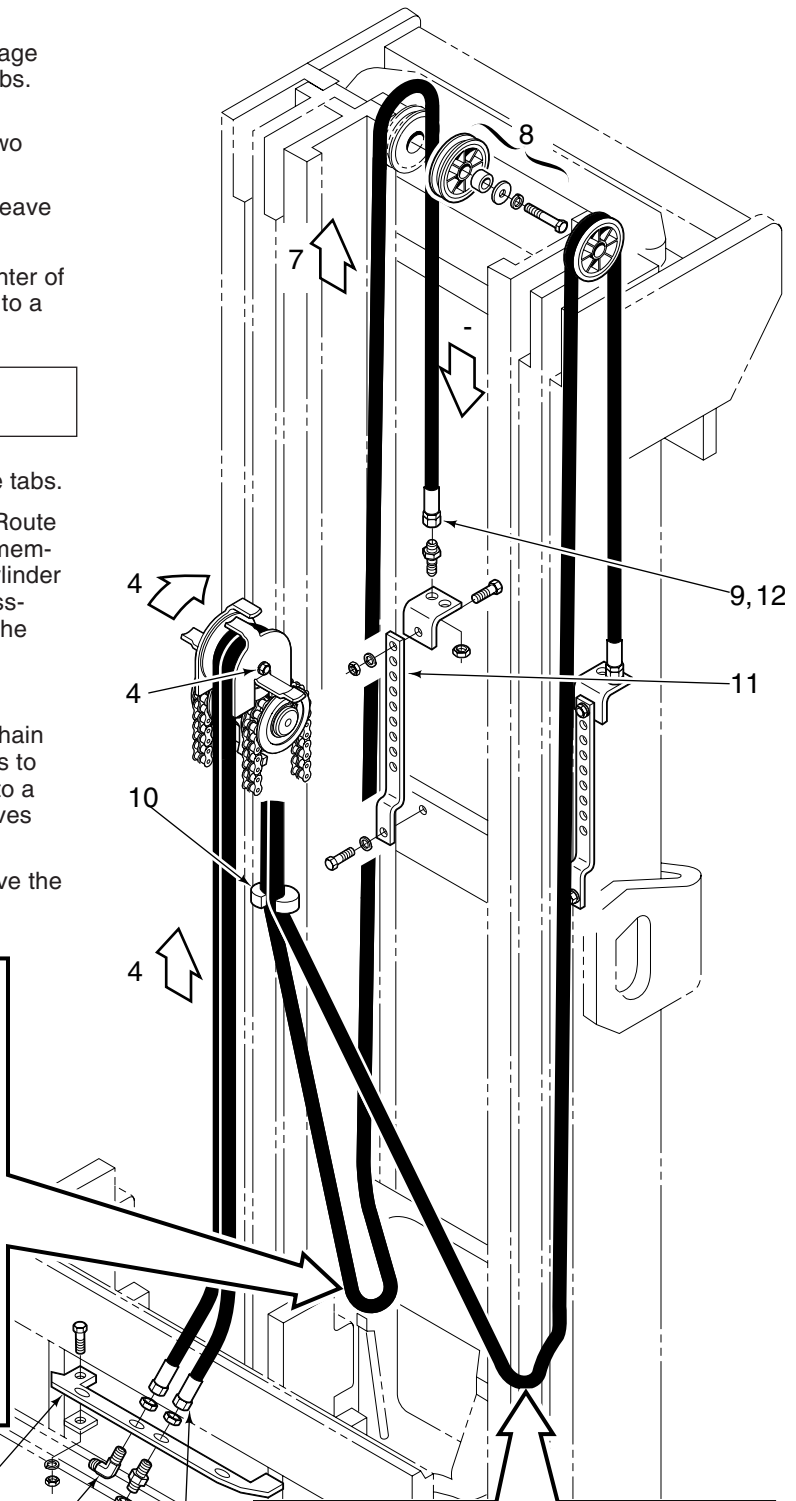
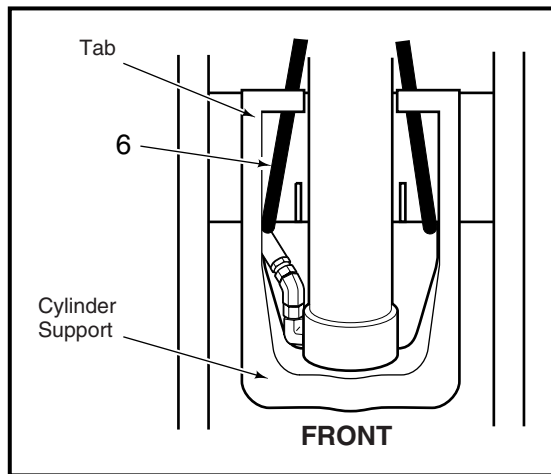
LIFT-TEK
ELECAR MASTS
Lift Technologies

Single Function Internal Reeving

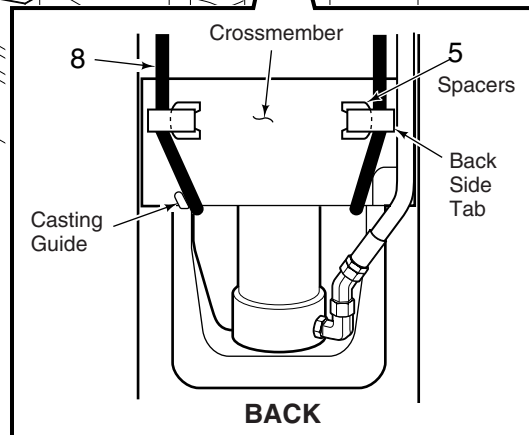
- 1 Install the carriage bracket to the tabs on the carriage side plates. Tighten the nuts to a torque of 38 ft.-lbs. (51 Nm).
- 2 Install the bulkhead and 90° fitting to the middle two holes in the carriage bracket.
- 3 Install the hoses to the carriage bracket fittings. Leave the fittings loose.
- 4 Route the hoses up and over the rollers on the center of the crosshead. Tighten the hose guard capscrew to a torque of 38 ft.-lbs. (51 Nm).

⚠ WARNING: Chain and block the uprights and carriage to secure for step 5.

- 5 Install spacers to the inner crossmember backside tabs.
- 6 Raise the carriage approximately 8 ft. (240 cm). Route the hoses downward on the front side of all crossmembers, then under the tab on the front side of the cylinder support. Feed the hoses backward under the crossmember, around the casting guide upward under the back side tabs.
- 7 Pull the hose ends to remove hose slack.
- 8 Remove the existing capscrew from the main lift chain shafts. Install the hose, sheave, shaft and spacers to the main lift chain shafts. Tighten the capscrews to a torque of 58 ft.-lbs. (79 Nm). Make sure the sheaves rotate freely.
- 9 Attach the hoses to the brackets and fittings. Leave the fittings loose on the bracket.



- 10 Install the hose clamp to the hoses half way between the crosshead and lower crossmember.
- 11 Pull down on the hoses to remove slack and stretch hoses 1 inch. Install the brackets on the front side of the crossmember using the next hole down. Tighten the capscrew to a torque of 38 ft.-lbs. (51 Nm).
- 12 Raise and lower the mast several times to make sure the hoses are tracking correctly. Use the white line on the hose to detect twisting. Adjust the hose ends if required. Tighten fittings making sure they do not twist.



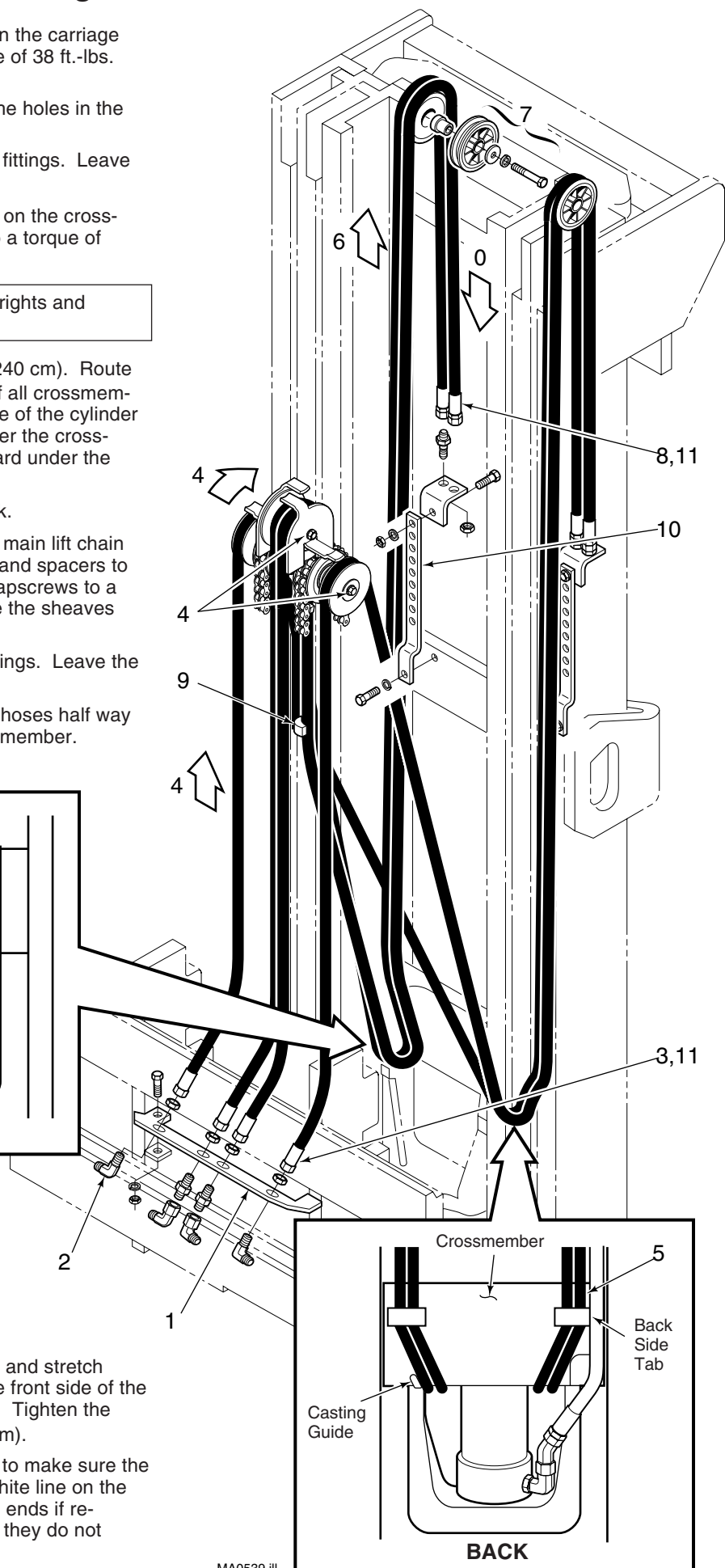
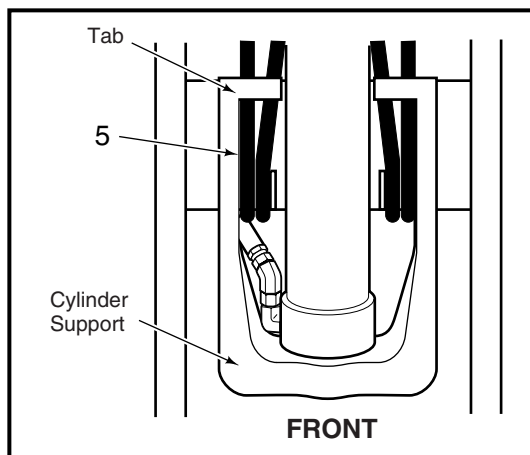
Double Function Internal Reeving

- 1 Install the carriage bracket to the tabs on the carriage side plates. Tighten the nuts to a torque of 38 ft.-lbs. (51 Nm).
- 2 Install the bulkhead and 90° fittings to the holes in the carriage bracket.
- 3 Install the hoses to the carriage bracket fittings. Leave the fittings loose.
- 4 Route the hoses up and over the rollers on the cross-head. Tighten the sheave capscrews to a torque of 38 ft.-lbs. (51 Nm).



WARNING: Chain and block the uprights and carriage to secure for step 5.

- 5 Raise the carriage approximately 8 ft. (240 cm). Route the hoses downward on the front side of all crossmembers, then under the tab on the front side of the cylinder support. Feed the hoses backward under the crossmember, around the casting guide upward under the back side tabs.
- 6 Pull the hose ends to remove hose slack.
- 7 Remove the existing capscrew from the main lift chain shafts. Install the hoses, sheave, shaft and spacers to the main lift chain shafts. Tighten the capscrews to a torque of 58 ft.-lbs. (79 Nm). Make sure the sheaves rotate freely.
- 8 Attach the hoses to the brackets and fittings. Leave the fittings loose on the bracket.
- 9 Install the hose clamp to the two center hoses half way between the crosshead and lower crossmember.



- 10 Pull down on the hoses to remove slack and stretch hoses 1 inch. Install the brackets on the front side of the crossmember using the next hole down. Tighten the capscrew to a torque of 38 ft.-lbs. (51 Nm).
- 11 Raise and lower the mast several times to make sure the hoses are tracking correctly. Use the white line on the hose to detect twisting. Adjust the hose ends if required. Tighten the fittings making sure they do not twist.

