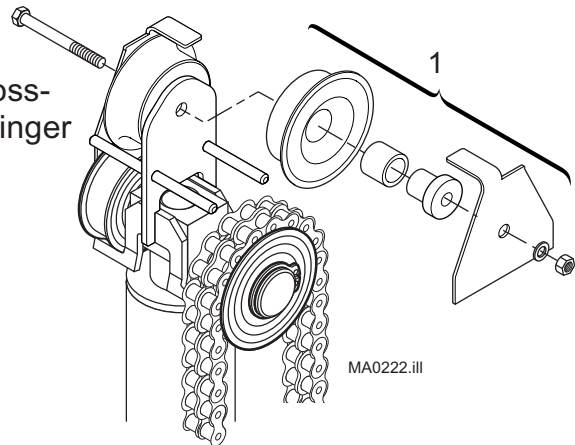


Installation Instructions

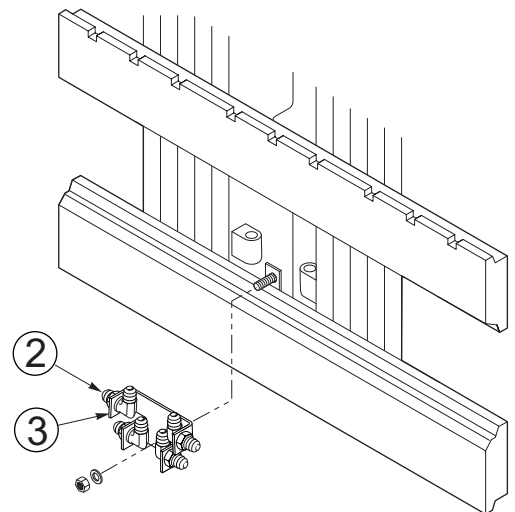
45D WORLD MAST Cold Storage (STD-VIS) Internal Reeving Kits

1. Install the shafts, tires and hose guards to the crosshead center plate. Leave the capscrew and nut finger tight to allow hose installation.

NOTE: For PIDs 45D-MQ-001 through 45D-MQ3233 the crosshead was a six sheave design. The current crosshead design uses two sheaves for improved service life. When replacing the crosshead components on the above PIDs, the six sheave crosshead should be converted to two sheave crosshead design. Contact Lift-Tek parts for conversion kit part numbers.



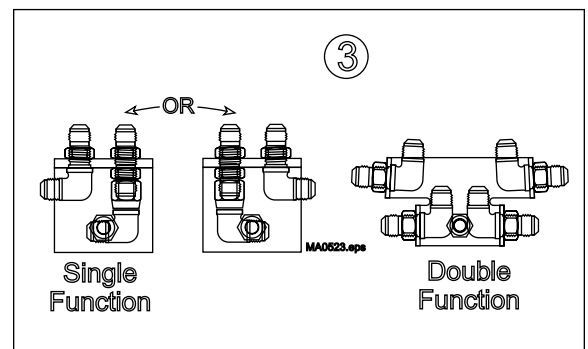
2. Install the carriage bracket to the center tab on the lower carriage bar. Tighten the center tab nut to a torque of 37-40 ft.-lbs. (50-54 Nm).



3. Install fittings to the carriage bracket.

SINGLE FUNCTION – Install the fittings pointing left or right as required. Tighten the fittings finger tight.

DOUBLE FUNCTION – Install the fittings to the left and right side location. Tighten the fittings finger tight.



Part No. 210220 R1

For Technical Assistance and to Order Parts . . .

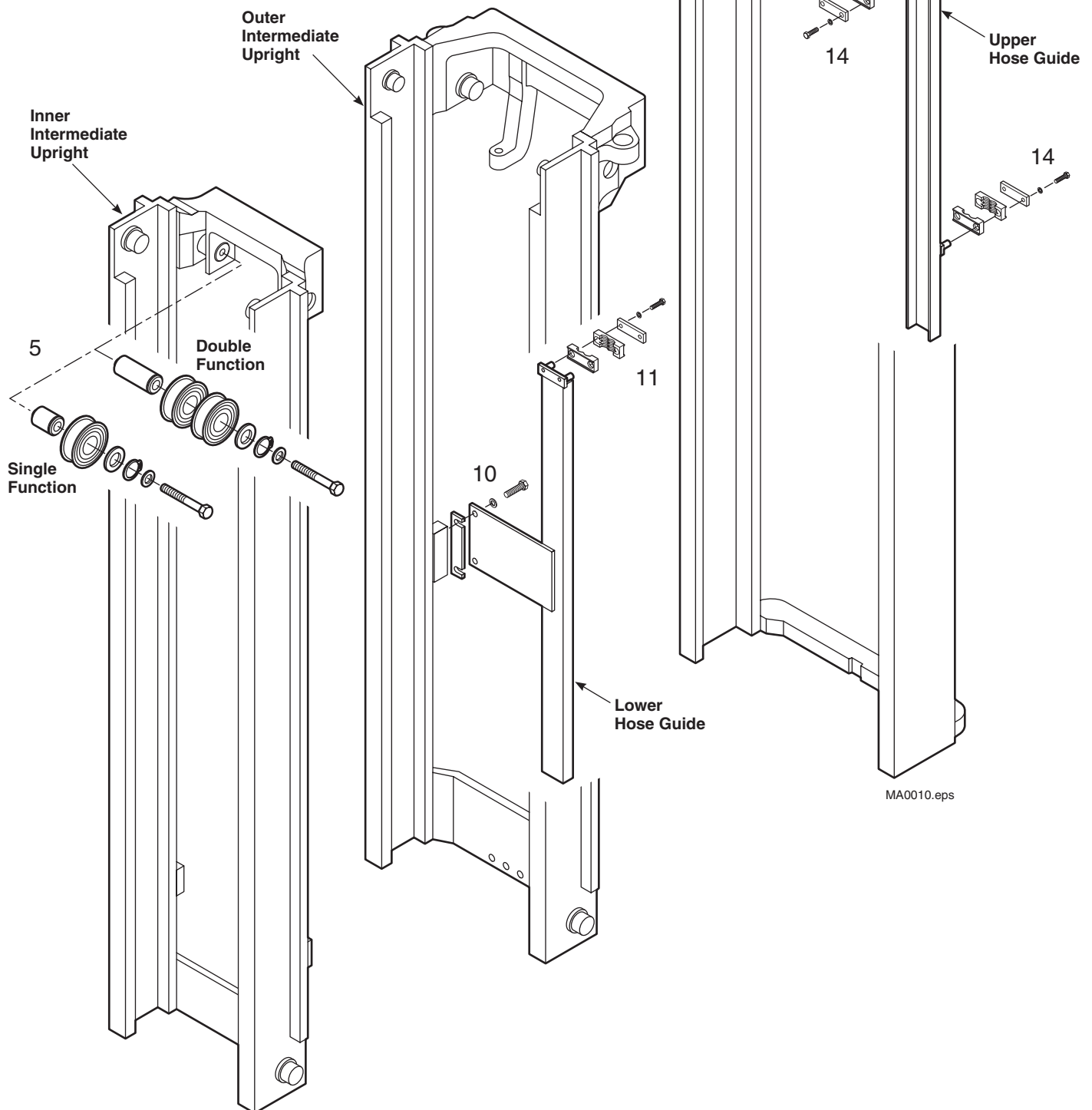
Call: 1-888-946-3330

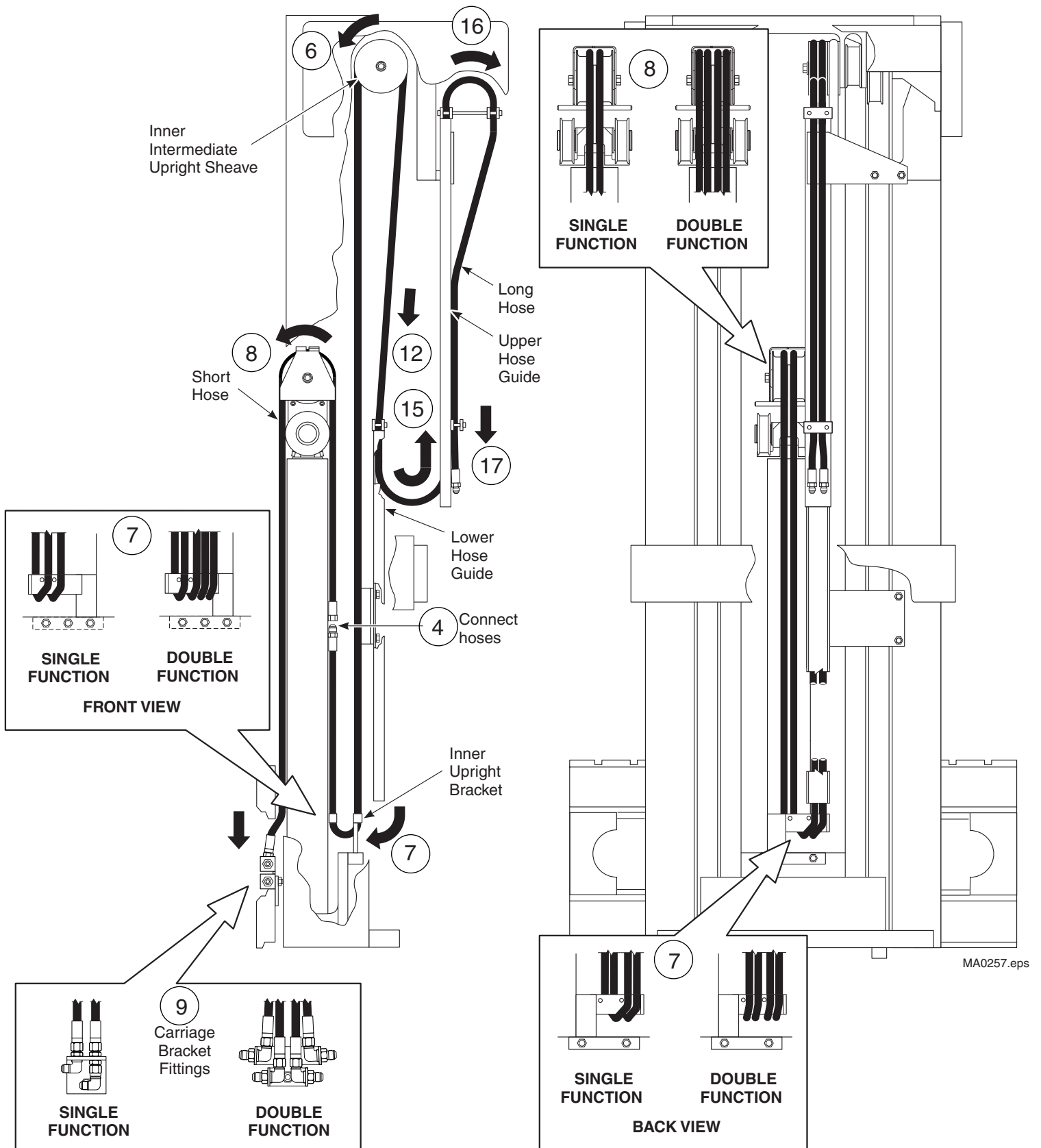
or

Write: Lift Technologies, 7040 South Highway 11, Westminster, S.C. 29693

LIFT-TEK
ELECAR MASTS
Lift Technologies

- 5 Install the shaft, sheave(s), shim and hardware to the inner intermediate upright chain sheave shaft. Tighten the capscrew to a torque of 37 ft.-lbs. (50 Nm).
- 6 Route the hose ends over the inner intermediate upright sheave(s) down to the inner upright bracket.
- NOTE:** The short hose routes over the cylinder crosshead.
- 7 Position the hoses with the tabs on the inner upright bracket as shown in the front and back view details.
- 8 Loosen the crosshead coverplate capscrew. Route the hoses up over the crosshead rollers.
- 9 Completely lower the carriage. Route the hoses down behind the top carriage bar to the carriage bracket fittings. connect the hose ends to the fittings leaving the hose ends finger tight.





- 10 Install the lower hose guide and spacer to the outer intermediate upright. Tighten the capscrews to a torque of 37 ft.-lbs. (50 Nm).
- 11 Install the hose clamps to the lower hose guide. Leave the capscrews finger tight.
- 12 Route hoses down to the lower hose guide. Place hoses under the hose clamp at the top of the lower hose guide. Pull downward on the hoses with 20 lbs. force. Tighten clamp capscrews enough to stop hose movement.

- 13 Install the upper hose guide to the outer upright. Tighten the capscrew to a torque of 37 ft.-lbs. (50 Nm).
- 14 Install the hose clamps to the upper hose guide. Leave the capscrews finger tight.
- 15 Route the hoses up into the upper hose guide.
- 16 Route the hoses under the hose clamps at the top of the upper hose guide. Tighten the capscrews finger tight.
- 17 Route the hoses under the hose clamp at bottom of the upper hose guide. Do not tighten the clamp capscrews.

Hose Adjustment

- 1 Tighten the crosshead coverplate capscrew to a torque of 30-33 ft.-lbs. (40-45 Nm).
- 2 Tighten the carriage bracket center nut to 37-40 ft.-lbs. (50-54 Nm).
- 3 Loosen the hose clamps on the carriage bracket. Align the hoses by twisting the hose ends to travel centered in the crosshead on the natural curve of the hose. The hoses should travel parallel to each other. Tighten the carriage bracket top clamp first, then the side clamp(s) to 7-11 ft.-lbs. (10-15 Nm).
- 4 Loosen the hose clamp at the top of the lower hose guide. Pull down on the hoses with 40 lbs. force. Tighten the hose clamp capscrews to 7-11 ft.-lbs. (10-15 Nm).
- 5 Loosen the hose clamps on the upper hose guide. Adjust the hoses to the natural hose bend and align evenly spaced in the guide rails. Tighten the hose clamp capscrews to 7-11 ft.-lbs. (10-15 Nm).
- 6 Raise and lower the mast slowly through several cycles checking for proper hose alignment, clearances and hose tracking in the guides.

