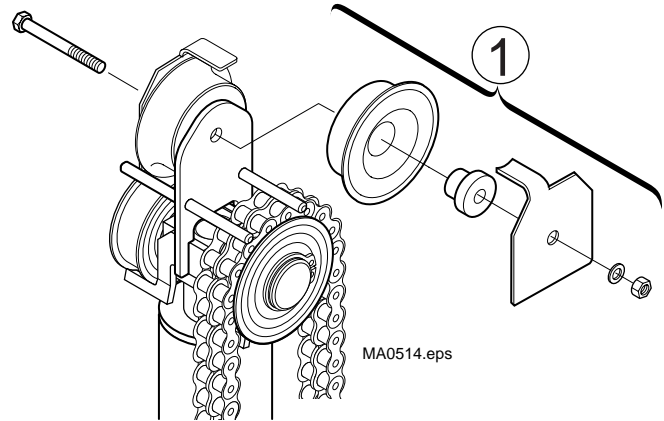


Installation Instructions

35D & 45D Quad Mast Internal Reeving Kits

1. Install the shafts, sheaves and hose guards to the crosshead center plate. Leave the capscrew and nut finger tight to allow hose installation.

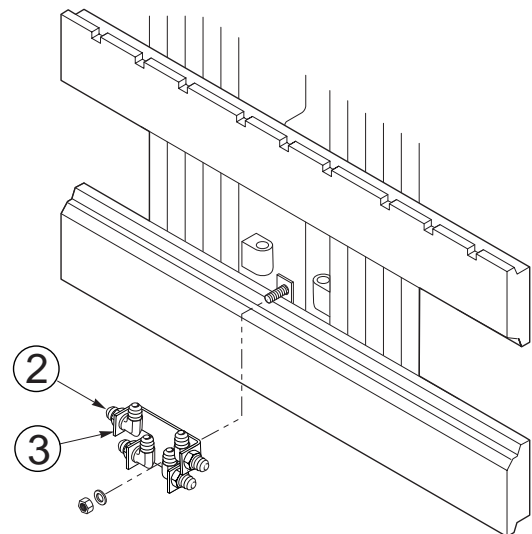
NOTE: For PIDs 45D-MQ-001 through 45D-MQ3233 the crosshead was a six sheave design. The current crosshead design uses two sheaves for improved service life. When replacing the crosshead components on the above PIDs, the six sheave crosshead should be converted to two sheave crosshead design. Contact Lift-Tek parts for conversion kit part numbers.



2. **SINGLE FUNCTION-** Install the carriage bracket to the center tab on the lower carriage bar. Tighten the center tab nut to a torque of 37-40 ft.-lbs. (50-54 Nm).

DOUBLE FUNCTION – Do not install carriage bracket.

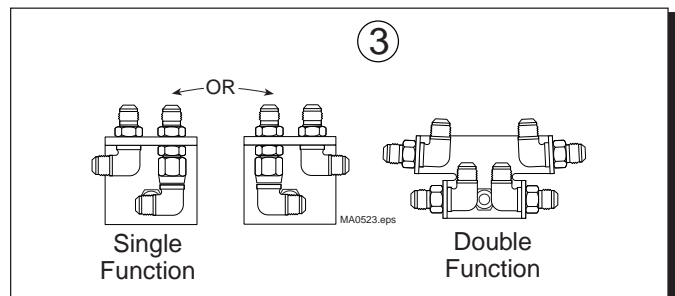
- 1) Route the hoses down and behind the upper fork bar.
- 2) Start all hose fittings on the bulkhead fittings of the carriage termination bracket.
- 3) Install the carriage termination bracket and torque nut to 37-40 ft.lbs. (50-54 Nm).
- 4) Tighten the hose fittings and jam nuts.
- 5) Check the outer bulkhead/hose fittings are not misaligned where the fittings will create interference with the chain ends.



3. Install fittings to the carriage bracket.

SINGLE FUNCTION – Install the fittings pointing left or right as required. Tighten the fittings finger tight.

DOUBLE FUNCTION – Install the fittings to the left and right side location. Tighten the fittings finger tight.



Part No. 216608 R2

For Technical Support . . .

Call: 1-888-946-3330

OR

Write: Lift Technologies, South Highway 11, Westminster, S.C. 29693

LIFT-TEK
ELECAR MASTS
Lift Technologies

4. Install the bracket and sheaves to the inner intermediate upright. Tighten capscrews to 37 ft.-lbs. (50 Nm).

SINGLE FUNCTION: Install sheaves to the top shafts.

5. Install the middle hose guide to the outer intermediate upright. Tighten capscrews to a torque of 37 ft.-lbs. (50 Nm).

6. Connect the short hoses to the carriage bracket fittings. Hand tighten the fittings.

35D DOUBLE FUNCTION: The No. 4 hoses connect to the two right fittings (viewed from the drivers seat).

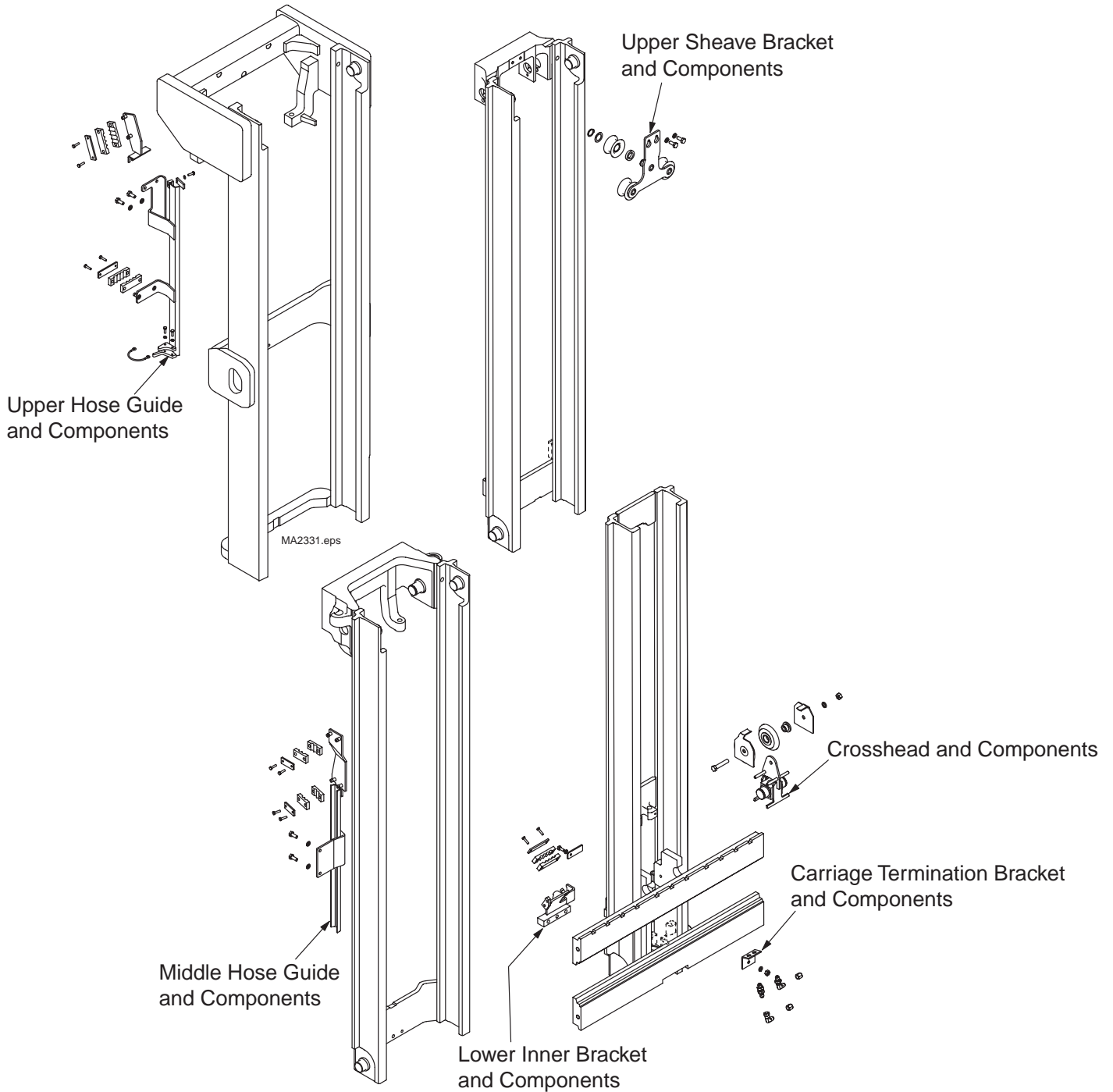
7. Route the hoses over the crosshead sheaves. Tighten the cover capscrew to a torque of 63 ft.-lbs. (85 Nm).

8. Route the hoses down between the freelif cylinder and crossmember. Position the hoses in their natural curve over the crosshead sheaves. Tighten the hose ends at the carriage bracket.

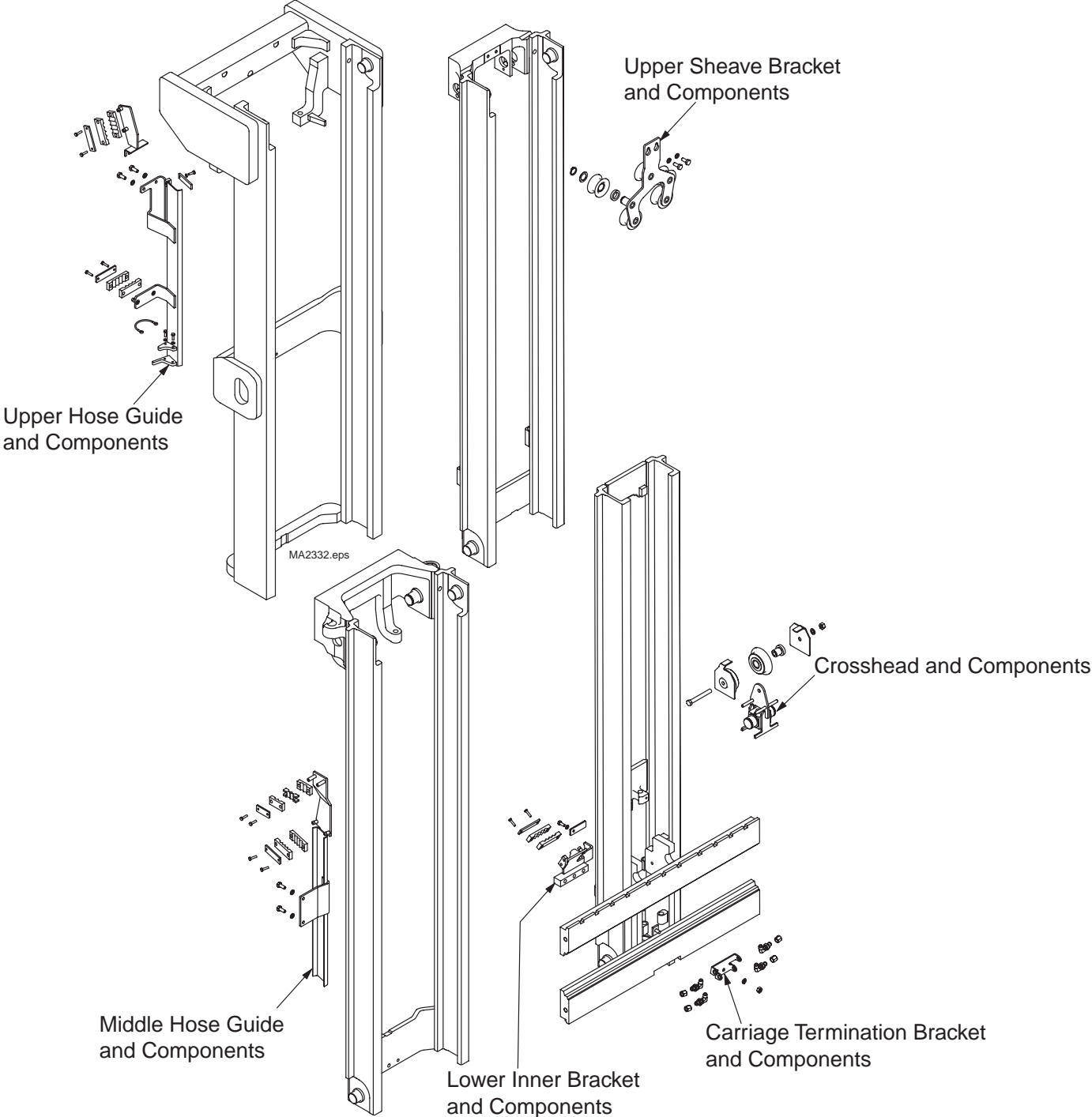
9. Connect the long hoses to the short hoses behind the freelif cylinder.

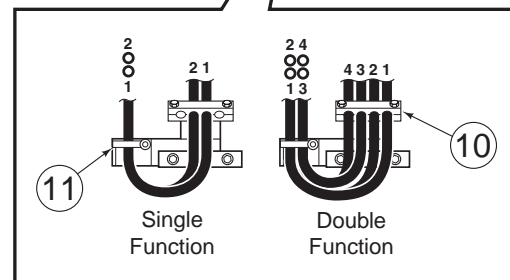
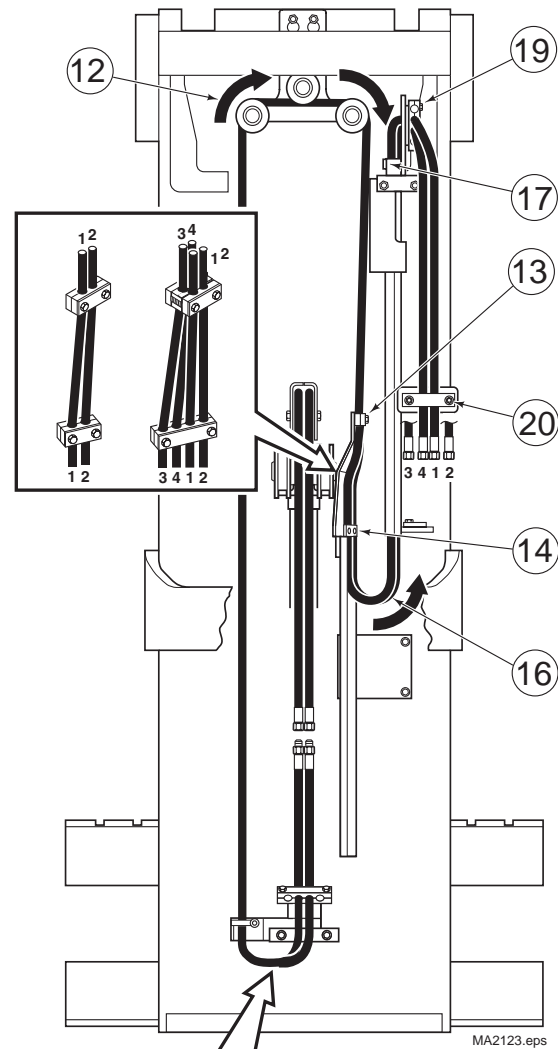
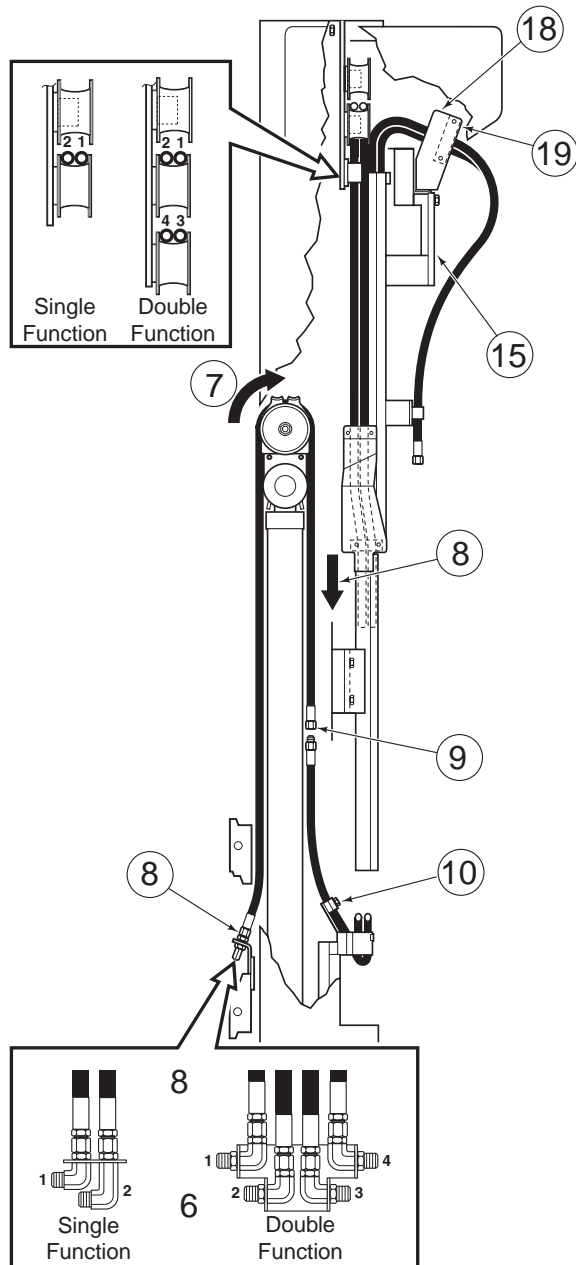
DOUBLE FUNCTION: The right side hoses (viewed from the drivers seat) are approximately 14 in. (355 mm) longer than the left side hoses.

Single Function IHR



Double Function IHR



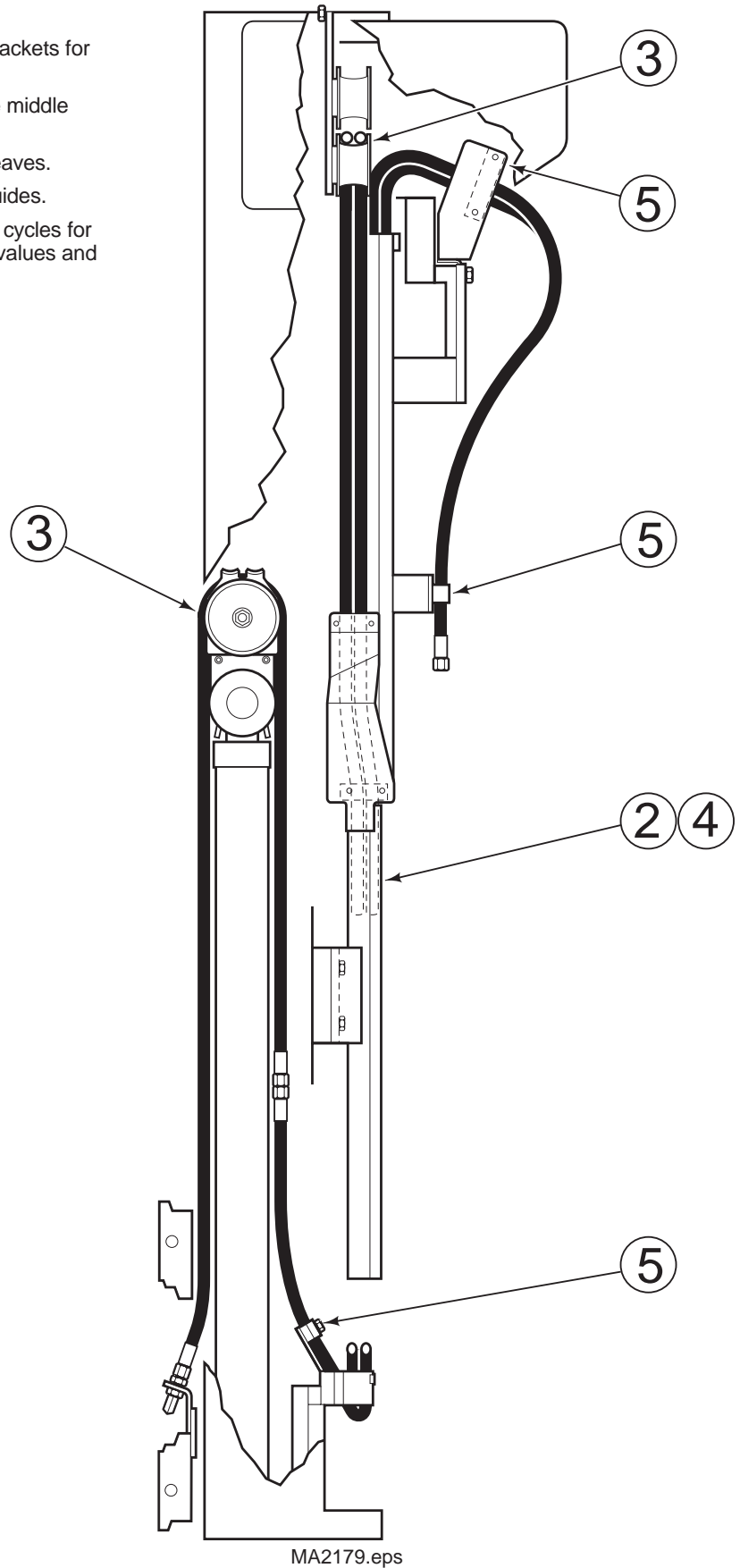


- 10.** Pull down on the hoses with approximately 30 lbs. force. Clamp the hoses to the lower bracket attached to the inner upright crossmember. Tighten the clamp capscrew to a torque of 11 ft.-lbs. (15 Nm).
- 11.** Route hoses up to the left through the guide. Position the hoses in the guide as indicated. Install the retainer bar with the end in the bracket slot.
- 12.** Route hoses up and over the upper bracket sheaves, then down to the middle hose guide.
- 13.** Pull down on the hoses with 40 lbs. force. Clamp the hoses to the top of the middle hose guide. Tighten the clamp capscrews to a torque of 11 ft.-lbs. (15 Nm).
- 14.** Clamp the hoses to the lower location on the middle hose guide. Arrange the hoses in the clamps as shown. Tighten the capscrews to a torque of 11 ft.-lbs. (15 Nm).
- 15.** Install the upper hose guide to the tapped bar on the outer upright. Leave the capscrews loose.
- 16.** Loop the hoses 5 in. (125 mm) below the bottom of the middle hose guide and route upward into the upper hose guide.

- 17.** Feed the hose ends up between the chain anchors. Install the hose retainer bar at the top of the upper hose guide. Tighten the capscrews to a torque of 11 ft.-lbs. (15 Nm).
- 18.** Install the guide bar between the upper hose guide and tapped bar on the outer upright. Route the hoses to the right of the guide bar. Tighten the guide capscrews to a torque of 36 ft.-lbs. (50 Nm).
- 19.** Clamp the hoses to the guide bar. Tighten the capscrews to a torque of 11 ft.-lbs. (15 Nm).
- 20.** Clamp the hoses to the back side of the upper hose guide. Tighten the capscrews to a torque of 11 ft.-lbs. (15 Nm).

Hose and Bracket Adjustment

1. Raise the mast slowly checking all guides and brackets for proper clearances and alignment.
2. Check for a sufficient length of hose between the middle and upper hose guides at full extension.
3. Check the hoses for proper tracking over the sheaves.
4. Check the hoses for even tracking in the hose guides.
5. Raise and lower the mast slowly through several cycles for a final check. Check all clamp capscrew torque values and retighten if necessary to 11 ft.-lbs. (15 Nm).



Single Function Shown